

3M

Scotch-Weld™

Polyurethane Reactive (PUR) Easy Adhesive Applicator

User's Manual

230V Australia

230V Europe

230V UK



Use only with 3M™ Scotch-Weld™ Polyurethane Reactive (PUR) Easy Adhesives

Please read all instructions before using.

Important Safety Instructions

SAVE THESE INSTRUCTIONS

Read all instructions before using this product.

3M™ Scotch-Weld™ Polyurethane Reactive (PUR) Easy Adhesive

For health and safety information, see product label and Material Safety Data Sheet for Scotch-Weld PUR Easy Adhesive before using.

WARNING

Use only with 3M™ Scotch-Weld™ Polyurethane Reactive (PUR) Easy Adhesive Cartridges. Use with any other materials **may cause hazardous conditions.**

WARNING

3M™ Scotch-Weld™ Polyurethane Reactive (PUR) Easy Adhesive Cartridges should be preheated or used in 3M Scotch-Weld PUR Easy Adhesive Preheater or 3M Scotch-Weld PUR Easy Adhesive Applicator only. Do not preheat 3M Scotch-Weld PUR Easy Adhesive Cartridges in ovens or other heating devices or use in other applicators. **May cause hazardous conditions.**

WARNING

Do not heat or expose 3M™ Scotch-Weld™ Polyurethane Reactive (PUR) Easy Adhesive to temperatures or surfaces above 135°C (275°F). **Vapors of heated material may be irritating to eyes and respiratory tract and may cause asthma-like symptoms in persons previously sensitized to isocyanates.**

WARNING

Do not clean or remove 3M™ Scotch-Weld™ Polyurethane Reactive (PUR) Easy Adhesive with heat, flame, or solvent. **May cause hazardous vapor or fire.**

Important: For additional health and safety information, see product label and Material Safety Data Sheet for Scotch-Weld Adhesive used.

WARNING

Avoid Contact with Flammable materials

3M™ Scotch-Weld™ Polyurethane Reactive (PUR) Easy Adhesive Applicator Operation

WARNING

To reduce the risk of electrical shock or injury while operating or servicing the 3M™ Scotch-Weld™ Polyurethane Reactive (PUR) Easy Adhesive Applicator, observe the following safety rules:

1. Operate and service the applicator only as described in this manual.
2. Connect the applicator only to a properly grounded outlet.
3. Do not unplug the applicator by pulling on the cord. Grasp the plug, not the cord, to unplug.
4. Do not handle the plug or applicator with wet hands.
5. Do not use the applicator outdoors or on wet surfaces.
6. Do not use the applicator with damaged cord or plug.
7. Do not use the applicator if it is not working properly or has been dropped, damaged, submerged in water, or left outdoors.

WARNING

Use only 3-prong grounded plug and properly grounded outlet. Failure to use properly grounded plug and outlet **may cause electrical shock.**

Important: If you are not sure of proper connections, get help from a qualified electrician or service person.

WARNING

Do not use an unapproved extension cord with the applicator. Use an extension cord which complies to all electrical codes and requirements.

Important: Use only a properly rated grounded extension cord which complies to all electrical codes and requirements. Use of an improper extension cord **may cause electrical shock.**

Continued on next page

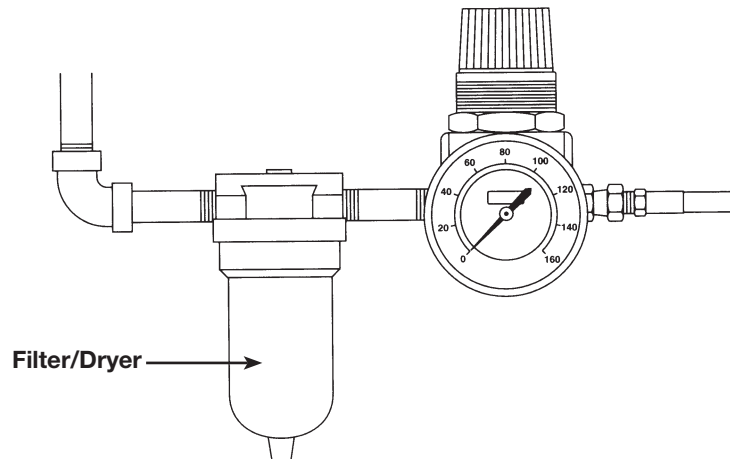
Setup and Installation

⚠ Caution

Do not connect the applicator to air supply with greater than 5,5 bar air pressure. **May cause hazardous conditions or damage the applicator.**

Important: For disposal of adhesive or adhesive components, please read and follow information found on the selected 3M™ Scotch-Weld™ Polyurethane Reactive (PUR) Easy Adhesive MSDS.

1. Remove the applicator from its shipping container and inspect for any obvious damage. If damaged, do not use and immediately contact your local 3M representative.
2. Connect air coupling provided on the end of the supply hose (male 1/8-inch pipe thread) to a filtered, regulated and **dry** air supply. (Regulator and filter not included.)

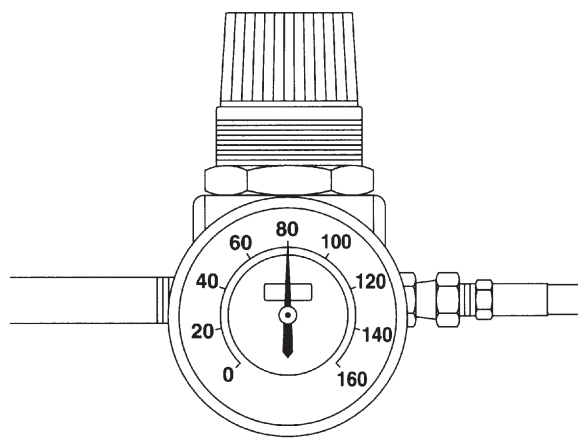


⚠ WARNING

Use only a properly grounded plug and outlet. Failure to use properly grounded plug and outlet **may cause electrical shock.**

Important: If you are not sure of proper connections, get help from a qualified electrician or service person.

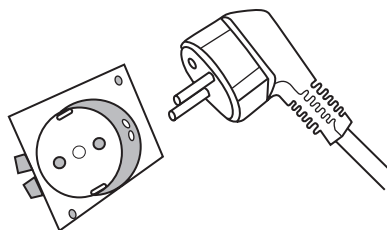
3. Adjust air regulator to a 5,5 bar starting point.



⚠ WARNING

Do not use an unapproved extension cord with the applicator. Use an extension cord which complies with all electrical codes and requirements.

4. Plug applicator into grounded 230 VAC receptacle.

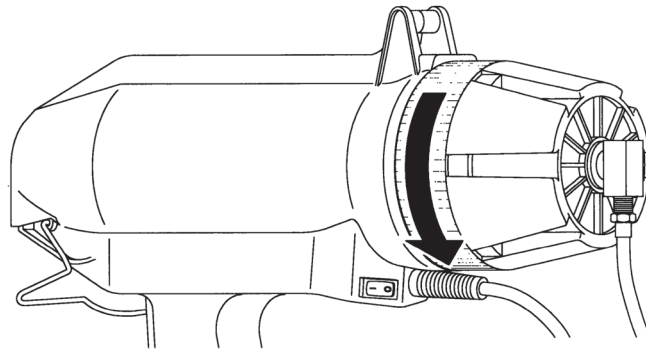


Important

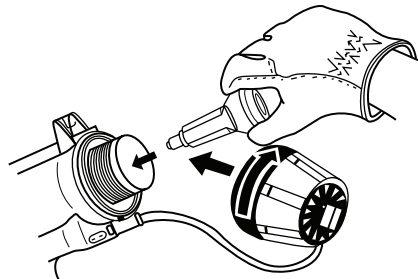
A fire may result if the appliance is not used with care, therefore:

Be careful using the appliance in places where there are combustible materials. Do not use in the presence of an explosive atmosphere. Be aware that heat may be conducted to combustible materials that are out of sight. Place the appliance on its stand after use and allow cooling before storage. Do not leave unattended when it is switched on.

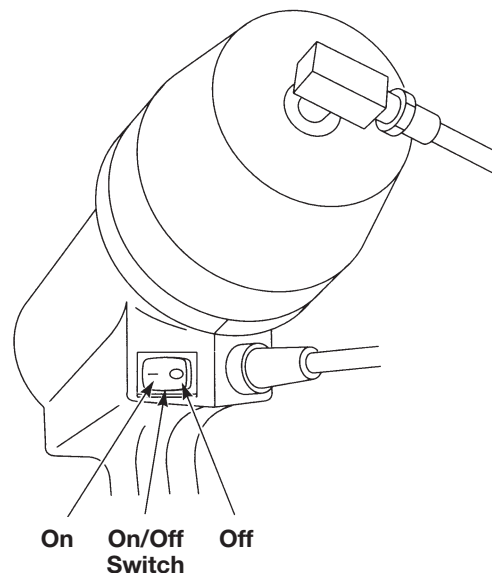
- 5. Remove end cap from applicator by unscrewing end cap counterclockwise.



- 6. Insert Nozzle Housing with Tip Shroud into rear of applicator and let it drop into position.



- 7. Push the on/off switch to the “on” position, indicated by visible red portion of the switch.



⚠ Caution

Avoid contact with hot adhesive, cartridge, applicator tip, and metal components. **May cause burns.**

Important: Wear heat resistant gloves and safety glasses when using.

⚠ WARNING

Use only 3M™ Scotch-Weld™ Polyurethane Reactive (PUR) Easy Adhesive Cartridges. Use with any other material **may cause hazardous conditions.**

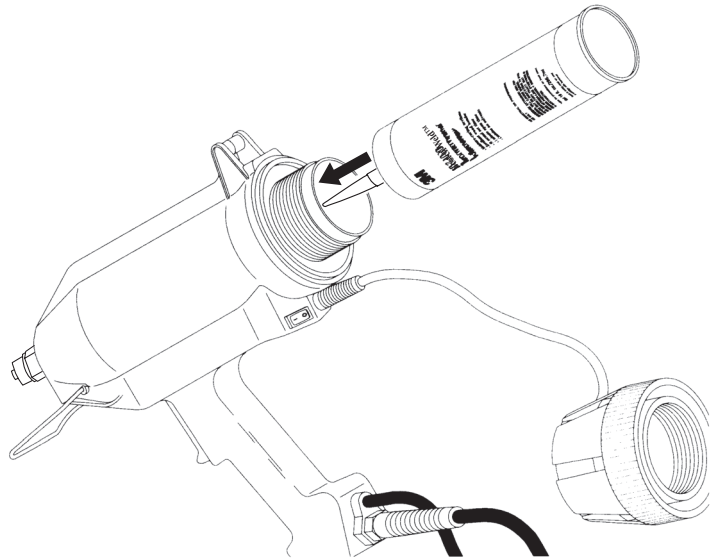
⚠ WARNING

3M™ Scotch-Weld™ Polyurethane Reactive (PUR) Easy Adhesive Cartridges should be preheated or used in 3M Scotch-Weld PUR Easy Adhesive Preheater or 3M Scotch-Weld PUR Easy Adhesive Applicator only. Do not preheat 3M Scotch-Weld PUR Easy Adhesive Cartridges in ovens or other heating devices or use in other applicators. **May cause hazardous conditions.**

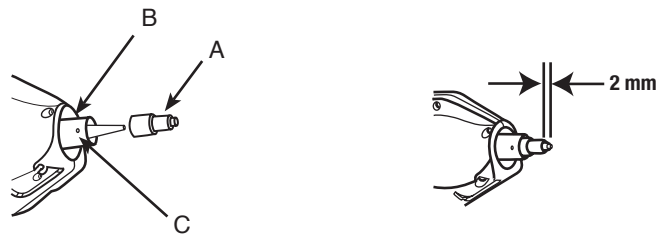
! WARNING

Use only 3M™ Scotch-Weld™ Polyurethane Reactive (PUR) Easy Adhesive Cartridges. Use with any other material **may cause hazardous conditions.**

5. Insert adhesive cartridge, complete with disposable nozzle into the applicator as shown.



6. Adjust the Shroud: With a Scotch-Weld PUR Easy adhesive cartridge and Disposable Nozzle loaded in the applicator, insert Nozzle Shroud (A) into Nozzle Housing (B) allowing Approximately 2 mm of the Disposable Nozzle protruding as shown and tighten set- screw (C) to secure



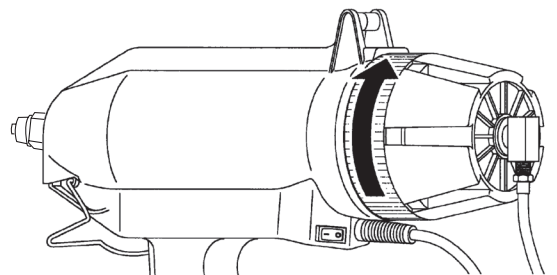
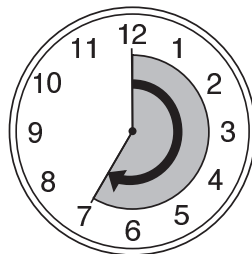
! WARNING

Use only 3M™ Scotch-Weld™ Polyurethane Reactive (PUR) Easy Adhesive Cartridges. Use with any other material **may cause hazardous conditions.**

! WARNING

3M™ Scotch-Weld™ Polyurethane Reactive (PUR) Easy Adhesive Cartridges should be preheated or used in 3M Scotch-Weld PUR Easy Adhesive Preheater or 3M Scotch-Weld PUR Easy Adhesive Applicator only. Do not preheat 3M Scotch-Weld PUR Easy Adhesive Cartridges in ovens or other heating devices or use in other applicators. **May cause hazardous conditions.**

7. Tighten applicator end cap to ensure a positive seal. Allow cartridge to warm for a minimum of 35 minutes.



Loading Applicator and Dispensing with New Adhesive Cartridge (continued)

⚠ WARNING

Do not heat or expose 3M™ Scotch-Weld™ Polyurethane Reactive (PUR) Easy Adhesive to temperatures or surfaces above 175°C (275°F). **Vapors of heated material may be irritating to eyes and respiratory tract and may cause asthma-like symptoms in persons previously sensitized to isocyanates.**

⚠ Caution

Do not connect the applicator to air supply with greater than 5,5 bar air pressure. **May cause hazardous conditions or damage the applicator.**

Important: For disposal of adhesive or adhesive components, please read and follow information found on the selected 3M™ Scotch-Weld™ Polyurethane Reactive (PUR) Easy Adhesive MSDS.

⚠ WARNING

Do not clean or remove 3M™ Scotch-Weld™ Polyurethane Reactive (PUR) Easy Adhesive with heat, flame, or solvent. **May cause hazardous vapor or fire.** For additional health and safety information, see product label and Material Safety Data Sheet for Scotch-Weld Adhesive used.

Important: For additional health and safety information, see product label and Material Safety Data Sheet for Scotch-Weld Adhesive used.

Dispensing

1. After the adhesive cartridge has completely warmed for a minimum of 35 minutes, (in the Easy Preheater or applicator) actuate trigger on applicator for adhesive application. (For best results, set air pressure at 5,5 bar to **start** adhesive flow.)
2. Adjust for desired adhesive flow rate by setting air regulator between 2 bar and 5,5 bar.

Note

For best results, hang the applicator from a tool balancer or stand up by means of the wire stand.

